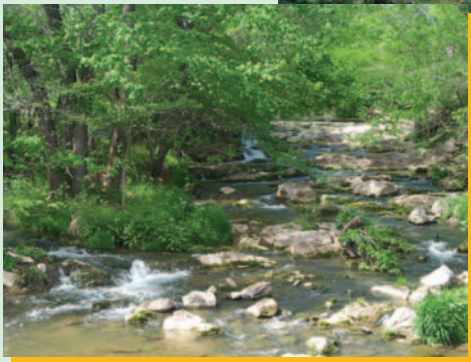
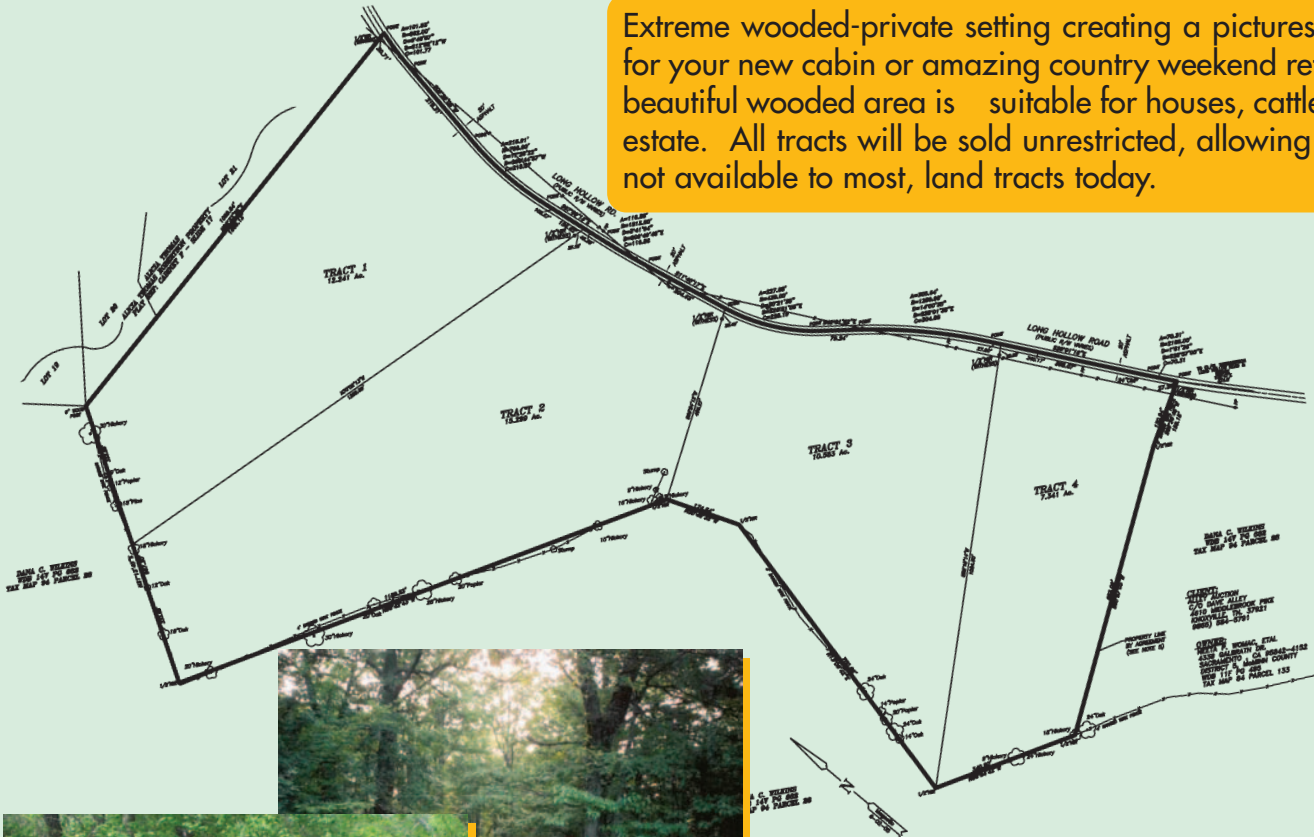


ABSOLUTE AUCTION

Neeta Womac Property

**45 Acres Subdivided
Saturday, May 27 - 10:30am**

Extreme wooded-private setting creating a picturesque setting for your new cabin or amazing country weekend retreats. This beautiful wooded area is suitable for houses, cattle or a mini-estate. All tracts will be sold unrestricted, allowing many uses not available to most, land tracts today.



- Location:** County Road 655 (Long Hollow Road, Riceville, Tennessee 37370). Five minutes to Exit 42 Interstate 75 in Riceville, Tennessee
- Directions:** From Riceville Exit 42, go 11 South, turn right, go 3/10 then left. Go 1.6 miles on 713 then left on 700. Go one mile, then turn right on County Road 655 (Long Hollow Rd). Watch for signs!
- Land:** 45.5 acres subdivided into four large tracts, ranging from 7.34 acres to 15.29 acres, with over 2,000 feet of public road frontage. Will be sold in tracts, groups, or as a whole.
- Inspection:** Auction company representatives will be on site Sunday, May 21st from 2pm to 4pm. Plats available on site. Buyers may inspect property anytime prior to auction.
- Terms:** 10% down. Balance in 20 days. 10% buyer's premium plus a \$750.00 survey origination fee.

ALLEY AUCTION
INCORPORATED
LAND DEVELOPERS/REAL ESTATE AUCTIONEERS

(865) 584-5791

License #1003

virtual tours at:
www.alleyauction.com

BROYLES
REAL ESTATE &
AUCTION
COMPANY

423-586-6103

License #1003

www.broylesauction.com